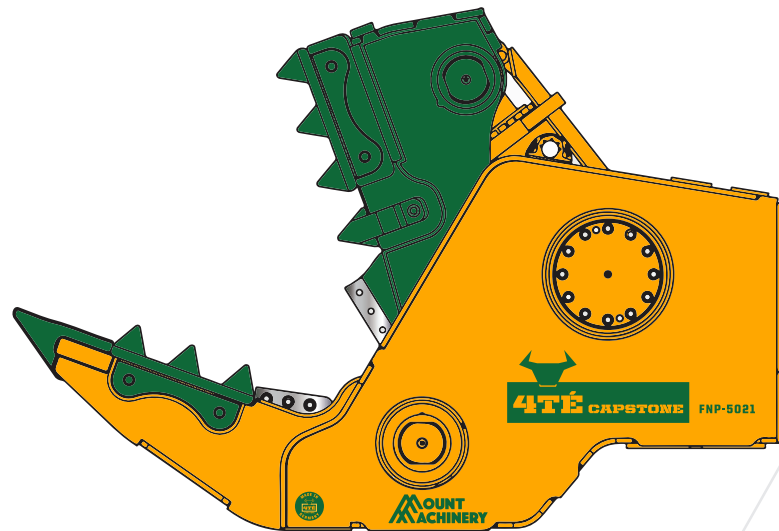




# Non-Rotating Pulveriser



The 4TÉ CapStone Non-Rotating Pulveriser is developed for the separating of reinforced concrete. It represents a huge improvement from the conventional mechanical pulveriser - its power is astounding!

## What does 'Made in Germany' mean to you?

...to us it means;

- superb quality,
- built to perform,
- built to last,
- and the pinnacle of innovation

resulting in this great product we have to offer you.

optimum performance in both.

- tremendously high crushing force!
- optimized crushing force through the geometry of the construction
- increased power to weight ratio, more power / reduced weight

## Crushing Forces Massively Improved!

A huge amount of intricate care and attention to detail has been utilised in the design of this attachment, to the point that even the geometry of the construction has been carefully calculated to ensure optimisation of the crushing force by creating maximum leverage power at the point where the most force is required. The point where the most force is required for crushing concrete is hugely different to that point when cutting metal. This is why a shear and a pulveriser cannot be incorporated into the same attachment and achieve

## Extremely Fast Cycle Time

The open and close speed is crucial in demolition. One second in cycle time can have a big impact on how long it takes to demolish a building. So we've eliminated the flow restrictions right from the excavator to the ram producing a stunningly fast cycle time. Among the many great features are:

- extremely large ports through rotary coupling with significantly less resistance to achieve higher flow
- special bespoke speed valve installed
- large internal bore hydraulic piping through to ram



**Mount Machinery**  
137 Gelderd Road,  
Leeds  
LS12 6BZ

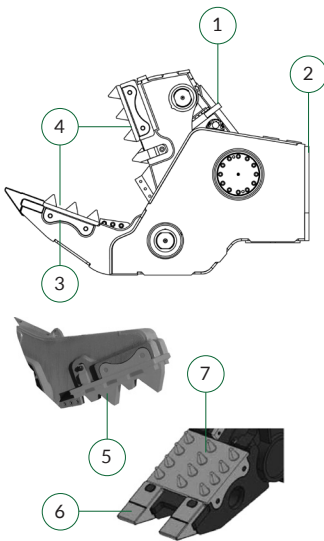
**Telephone**  
+44 (0) 113 244 0244

sales@mountmachinery.com  
[www.mountmachinery.com](http://www.mountmachinery.com)



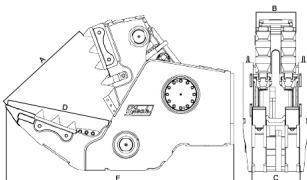


# Non-Rotating Pulveriser



**Key**

1. One piece ram and rod eye
2. Speedvalve for faster cycle times
3. Crusher teeth have additional side protection to increase wear life expectancy
4. Replacable and rotatable crusher teeth
5. Standard tooth plate for moving jaw
6. Standard scraper teeth - replacable
7. Optional multi tip tooth plate on fixed jaw



**Mount Machinery**  
137 Gelderd Road,  
Leeds  
LS12 6BZ

**Telephone**  
+44 (0) 113 244 0244

sales@mountmachinery.com  
[www.mountmachinery.com](http://www.mountmachinery.com)

**Easy & Low Cost Maintenance**

Maintenance plays a crucial part in demolition efficiency - all our 4TÉ CapStone series attachments are designed with ease of maintenance in mind, reducing downtime and ensuring the product works harder for you.

- replaceable wear parts such as crusher teeth and cutting blades can also be rotated to gain maximum use
- additional side protection on crusher teeth increases wear life expectancy
- no ram bleeding required
- modular design - wear parts interchangeable across several models
- optional link up to central lubrication system on excavator for cylinder and main pin pivot
- on-site replacement of wear parts possible

**Easy Handling**

Included in the design of this attachment are many little details, each contributing big benefits to the easy handling of this attachment. The saddle mounting has been placed at an angle for versatility whilst working at height or on the floor

- low net weight
- no excavator rotation circuit required
- safer attachment/detachment procedure to excavator than mechanical pulveriser
- bevelled saddle mounting for kinematics

**Long Lasting Product**

Our products are not just designed to perform brilliantly, but are also built to last.

- wear parts made of highly wear resistant casting
- new robust protection for the ram
- harder rod chrome
- better designed locking mechanism for wear parts
- ram rod and eye are one piece for lasting strength
- new form locking innovative construction
- innovative construction ensures low pressure point which means reduced risk of fractures in construction
- extremely high flow accommodation

Take a fresh look at your operations; what can you save?

	FN3521	FN5021
<b>Technical Details</b>		
Excavator Weight Range (T)	20-35	28-50
Self Weight excluding saddle (kg)	1950	2450
A - Jaw Opening (mm)	900	1000
B - Moving Jaw Width (mm)	400	425
C - Fixed Jaw Width (mm)	500	550
D - Jaw Depth (mm)	900	1000
E - Overall Height (mm)	1850	2250
F - Optional Cutting Blade (mm)	200	200
Closing Force at Anterior Teeth (T)	105	125
Open/Close Max Pressure (bar)	350	350
Cycle Time (seconds)	1.9/1.3	2.6/2.0
Open/Close Flow (l/min)	150-350	300-400

